

Shadsworth Infant School Newsletter

Friday 13th December 2024





Message from Mrs Crompton

What a wonderful Christmassy week we have had in school. The children were fabulous in their Nativity performances, what a lot of work had gone into learning lines, songs and parts. A big Thankyou to the children and adults for working so hard to produce lovely performances for everyone to enjoy. We hope you enjoyed them as much as we did. Our Christmas dinner on Tuesday was beautiful and everyone really enjoyed it, everyone had made lovely party hats to wear and the crackers and pigs in blankets were our favourites!

There is an expectation that children are in school everyday! Here is this week's attendance and lates.

This week's Attendance and Lates



Class	%	Lates
RB	90	8
RM	93	5
1J	98	8
1H	87	10
2H	95	10
2K	91	19
Total	92	65

'Well done' to this week's Shadsworth Stars

This week we said 'Well Done' to



Class	Good Work	Good Behaviour
RB	Alex B	Lincoln C
RM	Elias C	Ivy Grace W
1J	Rukkilah A	Willow K
1H	Brooklyn M	Izabela R
2H	Finley P	Caythan C
2K	Luca B	Howie B

Headteacher Award goes to	Sienna J
Lunchtime Award goes to	Olivia May D



Dates for your diary



NEWSLETTER Friday 13th December

DAY	TIME	EVENT
Tuesday 17 th December 2024	2.15pm-3.00pm 4.00pm-5.15pm	Nursery AM/PM Christmas Disco - £1 per person Reception Classes & KS1 Christmas Disco - £4 per person includes, drink, hot dog and dancing
Thursday 19 th December 2024	1.30pm During school	Class Christmas Parties Father Christmas visits Classes
Friday 20 th December 2024	During School 1.30pm	Festive Hair Day - Please bring £1 School closes for Christmas
Monday 6 th January 2025	8.45am School starts	School Re-Opens 8.00am Breakfast Club - 8.35am Soft Start
Tuesday 14 th January 2025	9.00am	Let's Get Talking - Parents please join us
Thursday 16 th January 2025	9.00am	Reception Stay & Learn - Parents please join us
Thursday 23 rd January 2025	9.00am	Year 1 Stay & Learn Reading - Parents please join us
Thursday 30 th January 2025	9.00am	Year 2 Stay & Learn Reading - Parents please join us
Wednesday 5 th February 2025	9.00am	Class RM Public Transport Trip - further information to follow in the New Year
Thursday 6 th February 2025	9.00am	Class RB Public Transport Trip - further information to follow in the New Year
Wednesday 12 th February 2025	9.00am	Year 2 Chill Factor Trip - further information to follow in the New Year
Thursday 13 th February 2025	9.00am	Year 2 Chill Factor Trip - further information to follow in the New Year
Friday 14 th February 2025	9.00am	Class RM Assembly - Parents please join us
Friday 14 th February 2025	During School 3.15pm	Children to wear Red for Non-Uniform Day - Please bring £1 School closes for Half-Term
Tuesday 25th February 2024	8.45am School starts	School Re-Opens 8.00am Breakfast Club - 8.35am Soft Start

Take a look at this week's Picture News
commencing 9th December 2024

Week



Let's look at this week's story



The price of stamps went up by 30p in October.

Think about: What are stamps? Why do people buy stamps?

Explain that people buy stamps to stick onto the letters, cards or parcels they want to send through the post. Stamps show postal workers that the person who is sending the letter, card or parcel has paid for it to be delivered. At this time of year, many people send cards to each other. It is thought that with the cost of stamps going up, not as many cards will be sent through the post this year.

Think about: Have you been writing and giving any cards out recently? Do you enjoy receiving cards? What do you like about it? Opening the envelope, looking at any pictures on the card, reading the message inside? Do you send your cards through the post? How else can you get a card to someone?

© Pickaxe News 2024



British Values



Rule of Law

There are rules we must follow when we send a letter or a parcel through the post. These include adding an address to show where the letter or parcel is going, and stamps to show we have paid for the letter or parcel to be delivered.

© Pickaxe News 2024

Protected Characteristics



Some people send cards to celebrate events as part of their religion or belief. Nobody should be treated unfairly because of their religion or belief.



© Pickaxe News 2024



UN Rights of the Child



We can choose our own thoughts, opinions and religion. These may impact if and how we choose to celebrate Christmas.



© Pixabay.com 2024



Useful Information



1 - Accurate information is a key part to motivation

GET stuck IN Winter.

The Holiday Activities and Food (HAF) programme is a scheme funded by the Government and delivered by local councils, providing healthy food and fun activities to children and young people, with free places available for those on free school meals.

Sessions will include a variety of fun activities, including sports, music, arts and other exciting opportunities to learn and develop skills like meeting new friends, alongside a nutritious meal each day.

For information on how you and your family can get involved this Winter, please visit www.getstuckin.org.uk or call the booking team on 07879 774978 and quote your FSM code.

FREE PLACES AVAILABLE FOR THOSE ELIGIBLE FOR FREE SCHOOL MEALS & VULNERABLE FAMILIES INCLUDING SEND

YOUR FSM CODE IS:

FSM157

Shadsworth Community Infant School

TO FIND OUT MORE:
07879 774978



As you are aware we use ParentMail for our communication. Please download the App to receive notifications to enable you to keep up to date on school communications and completion of relevant documents etc. Also please check out our school facebook page.



Breakfast Club Rule

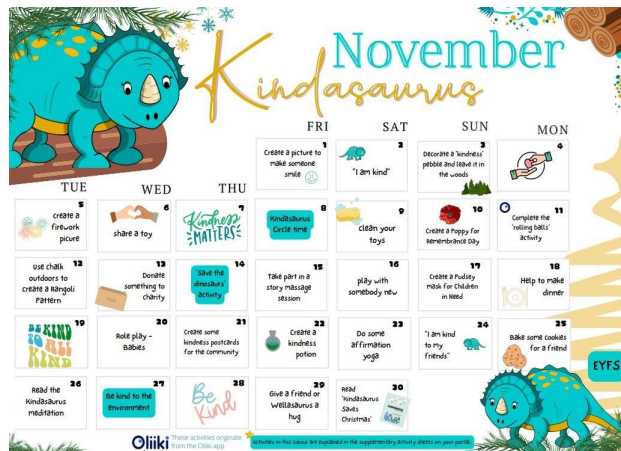
IT IS **ESSENTIAL** EACH TIME YOU DROP YOUR CHILD OFF AT BREAKFAST CLUB, **YOU BRING YOUR CHILD INTO THE SCHOOL HALL, GIVE YOUR CHILD'S NAME AND MONEY TO THE MEMBER OFF STAFF SAT AT THE TABLE NEAR THE PATIO DOORS.**

PLEASE **DO NOT** DROP YOUR CHILD OFF AT THE SCHOOL GATES.

Please can we remind you that Breakfast Club needs to be paid for daily, it is £1 per day or £4 for the week to be paid in advance on the Monday - Thank you

Mini minds Matter

Introducing our mindful calendar, each month the calendar will give you ideas and suggestions of how to be more mindful as a family. Please take a few moments to look at the calendar, share the information with your child/children, have fun and enjoy!



For the safety of our children, please can we remind all Parents/Carers Do not park on the car park at school. This is for staff parking only. It is not for pick-ups or drop-offs. Many thanks for your continued support